

Construction Notice

February 2016

Summary

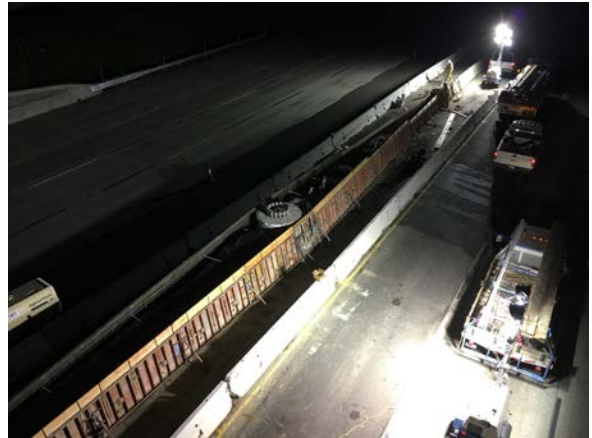
Construction crews continue to install cast-in-drilled-hole (CIDH) pile sign foundations and sign posts throughout the I-680 corridor. Crews also continue to do electrical work on some city streets and along I-680. Work occurs during both day and night shifts. Electrical work may begin on some streets in San Ramon this month, depending on a permit application and weather.

Purpose

The sign posts will support the future placement of overhead toll system signs. The electrical system being installed on city streets and along I-680 will provide power to the toll system signs.

What to Expect

- Intermittent and alternating nightly closures continue in the northbound and southbound directions in the lanes closest to the median and the lane closest to the shoulder. Approved construction work hours are: Monday through Thursday from 8 p.m. – 5 a.m, Friday from 8 p.m. – 7 a.m.
- Construction crews will be present on some city streets near I-680 with temporary and minor pedestrian detours to maintain public safety.
- Temporary k-rail, construction signage and orange plastic fencing remains along the corridor to maintain a safe work zone.
- Construction lighting will be present and directed away from residential areas.



First image: Construction crews prepare a sign foundation area for a concrete pour.
Second image: Crews complete a concrete pour in a separate location.

Contact Us

510-817-5668

info@bayareaexpresslanes.org

bayareaexpresslanes.org

twitter.com/511SFBay

facebook.com/511SFBay

Construction is a dynamic process and information is subject to change without notice. Work is subject to weather conditions. Please use caution while traveling through the construction zone.