



Construction Notice: March 31, 2016 Northbound I-680 Contra Costa Boulevard Off-Ramp Closure

Summary

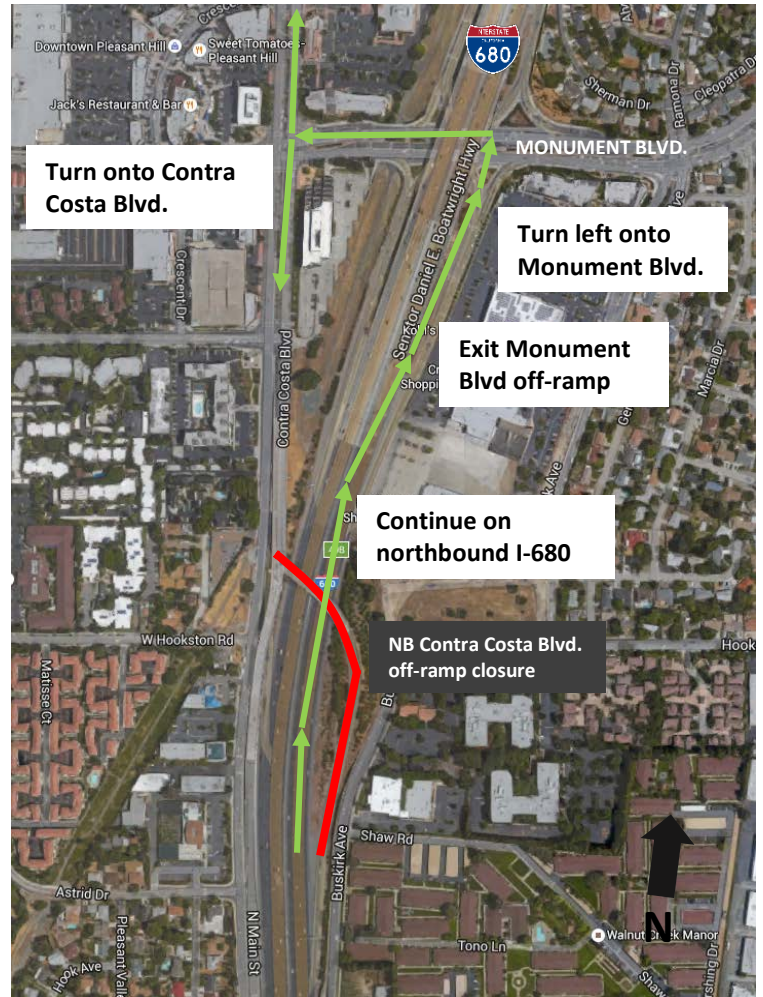
The northbound I-680 Contra Costa Boulevard off-ramp is scheduled to be closed on Thursday, March 31 from 9 p.m. to 5 a.m. The ramp closure is for the I-680 Express Lanes regional communications network construction activity.

Purpose

Construction activity includes the installation of conduit beneath the roadway for the Express Lanes regional communications network.

Things to know:

- Detour route for the northbound I-680 Contra Costa Blvd off-ramp closure:
 - Continue on northbound I-680,
 - Exit the Monument Blvd off-ramp,
 - Turn left onto Monument Blvd,
 - Turn onto Contra Costa Blvd.
- When traveling near the construction site:
 - Always use caution
 - Be alert for on-site personnel
 - Be prepared to reduce speeds
 - Follow posted signs



Detour route for northbound I-680 Contra Costa Boulevard off-ramp closure.

Contact Us

510-817-5668

info@bayareaexpresslanes.org

www.mtc.ca.gov

twitter.com/511SFBay

facebook.com/511SFBay

Construction is a dynamic process and information is subject to change without notice. Work is subject to weather conditions.

