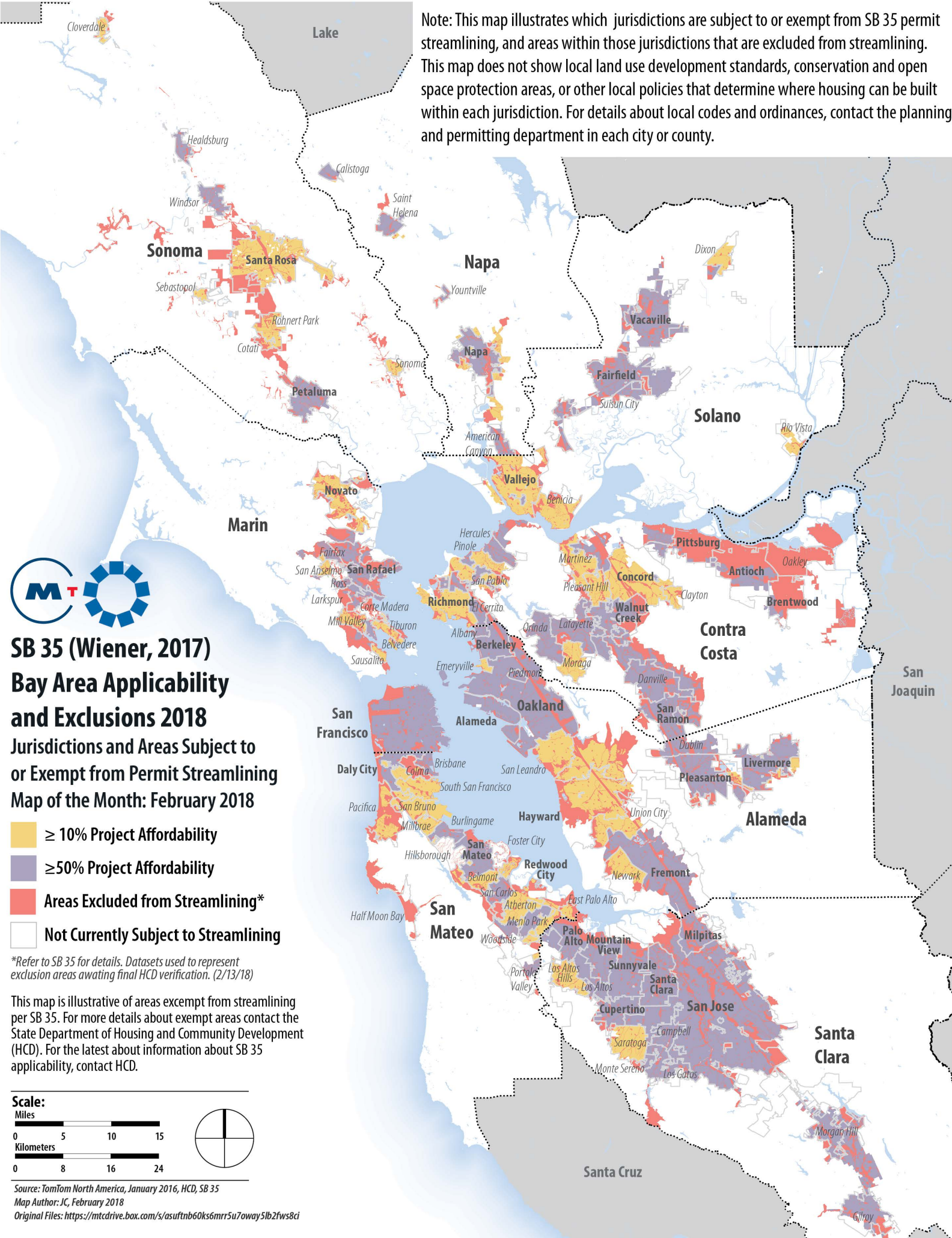


Note: This map illustrates which jurisdictions are subject to or exempt from SB 35 permit streamlining, and areas within those jurisdictions that are excluded from streamlining. This map does not show local land use development standards, conservation and open space protection areas, or other local policies that determine where housing can be built within each jurisdiction. For details about local codes and ordinances, contact the planning and permitting department in each city or county.

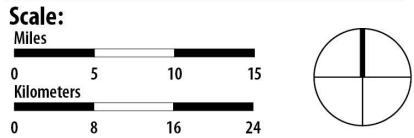


**SB 35 (Wiener, 2017)
Bay Area Applicability
and Exclusions 2018**
Jurisdictions and Areas Subject to
or Exempt from Permit Streamlining
Map of the Month: February 2018

- ≥ 10% Project Affordability
- ≥ 50% Project Affordability
- Areas Excluded from Streamlining*
- Not Currently Subject to Streamlining

*Refer to SB 35 for details. Datasets used to represent exclusion areas awaiting final HCD verification. (2/13/18)

This map is illustrative of areas exempt from streamlining per SB 35. For more details about exempt areas contact the State Department of Housing and Community Development (HCD). For the latest about information about SB 35 applicability, contact HCD.



Source: TomTom North America, January 2016, HCD, SB 35
Map Author: JC, February 2018
Original Files: <https://mtcdrive.box.com/s/asuftnb60ks6mrr5u7oway5lb2fws8ci>



Senate Bill 35 (Wiener, 2017) Exclusion Areas

Table 1: Data Sources

Per SB 35 legislation, exclusion areas apply within U.S. Census designated urbanized areas

Exclusion Areas*	Datasets and Sources	Description
Coastal Zone (Sec. 3;a;6): A	Coastal Sediment Master Plan: Coastal Zone Boundary (CCC) http://www.dbw.ca.gov/csmw/SpatialData.aspx	
Prime Farmland or Farmland of Statewide Importance (Sec. 3;a;6): B	Farmland Mapping and Monitoring Program (FMMP) Farmland FMMP: http://www.dbw.ca.gov/csmw/SpatialData.aspx Categories: http://www.conservation.ca.gov/dlrp/fmmp/mccu/Pages/map_categories.aspx	Selected lands of types: Prime Farmland, Unique Farmland, Farmland of Statewide Importance, and Farmland of Local Importance
Wetlands (Sec. 3; a; 6): C	US Fish & Wildlife Service: California Wetlands https://www.fws.gov/wetlands/data/mapper.html	
Fire Hazards – High and Very High (Sec. 3; a; 6): D	CalFire: California Fire Hazard Severity Zone Map Update Project, 2007 http://www.fire.ca.gov/fire_prevention/fire_prevention_wildland_zones_maps	Selected high and very high fire hazard severity zones
Hazardous Waste Sites (Sec. 3; a; 6): E	CA Department of Toxic Substances Control EnviroStor http://www.envirostor.dtsc.ca.gov/public/	Created 50 meter buffer around listed locations
Earthquake Fault Zone (Sec. 3; a; 6): F	Association of Bay Area Governments Resilience Open Data Site: Alquist-Prolo Fault Zones http://resilience.abag.ca.gov/open-data/	
Flood Zones and Floodways (Sec. 3; a; 6): G,H	Association of Bay Area Governments Resilience Open Data Site: Flood - 100 & 500 year http://resilience.abag.ca.gov/open-data/	Selected 1% annual chance (100 year) flood hazards (zones A, A99, AE, AH, AO) and 1% annual chance (100 year) flood hazard & wave action (zones V, VE)
Conservation Lands (Sec. 3; a; 6): I	California Protected Areas Database (CPAD); http://www.calands.org/ Public Parks and Open Space: Plan Bay Area 2040 http://2040.planbayarea.org/	
Habitat for Protected Species (Sec. 3; a; 6): J	“Critical Habitat”, Figures 2.9 -5 through 2.9 -8, Plan Bay Area 2040 Environmental Impact Report (EIR) http://2040.planbayarea.org/reports	Due to the large extent of the habitat for the Alameda Whipsnake we have purposely excluded this species from our analysis
Conservation Easements (Sec. 3; a; 6): K	California Conservation Easement Database http://www.calands.org/	

* For the full text of the SB 35 legislation, see: https://leginfo.legislature.ca.gov/faces/billNavClient.xhtml?bill_id=201720180SB35