

VITAL SIGNS



vitalsigns.mtc.ca.gov



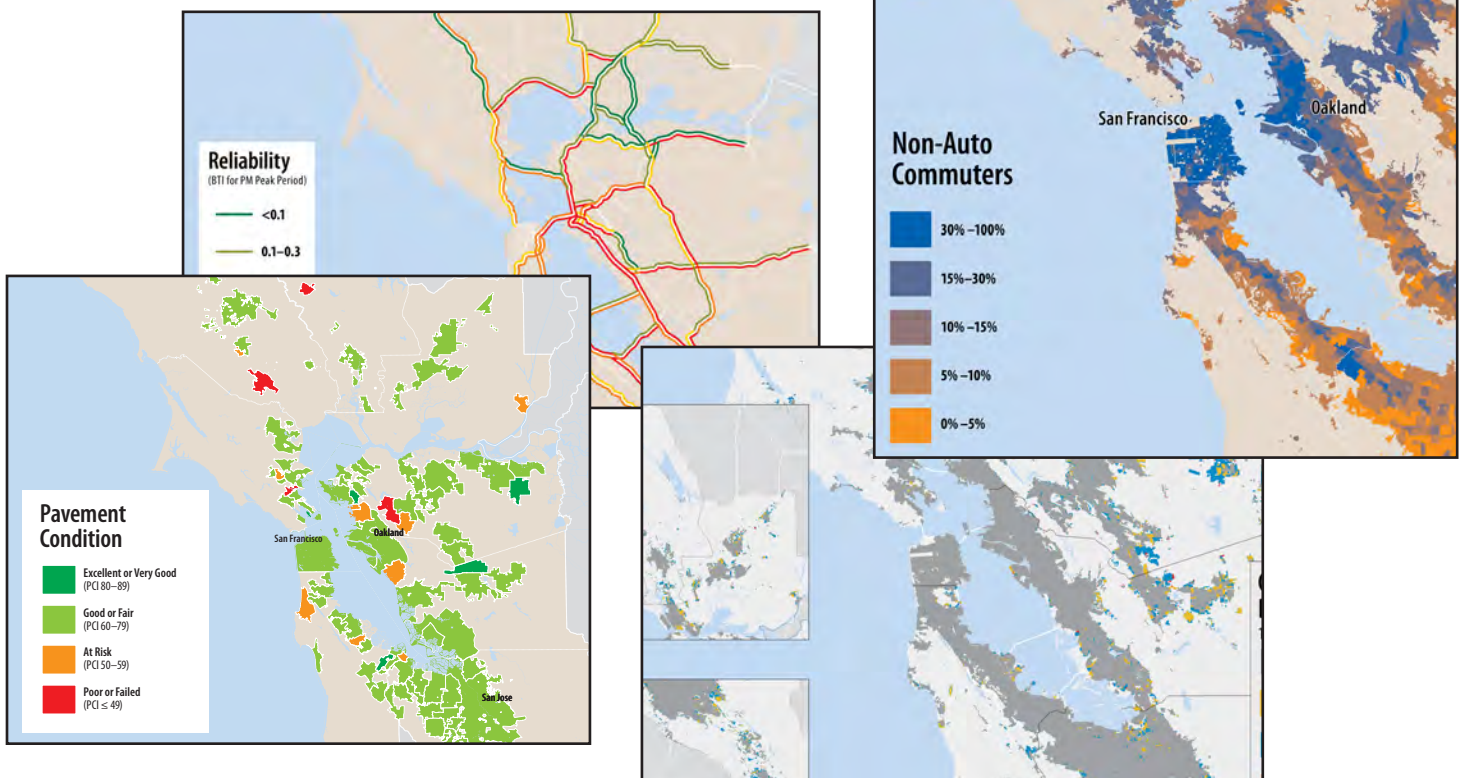
MTC is pleased to present *Vital Signs*, an innovative and interactive online tool to help you track the Bay Area's progress toward reaching key transportation, land use, environmental and economic policy goals — and to illustrate our region's historical trends, differences and similarities between our many communities, and how the Bay Area stacks up compared to other major metro areas. Just as indicators such as temperature, pulse and blood pressure reveal much about a person's overall health, so too can measures such as freeway delay, housing construction and per-capita gross regional product be used to gauge the performance of our diverse and dynamic region.

As you explore the *Vital Signs* homepage, you will find an overview of each performance area — with links to individual measure pages where you can view graphs and maps that highlight the performance of the region, of individual cities and counties, and of other metropolitan areas. All data is downloadable on each of the measure pages or through the Data Center.

Vital Signs is rolling out in phases. Phase 1 (completed January 2015) examines 14 different transportation indicators. Use Vital Signs now to find the answers to your transportation questions!

- Is my commute more congested than my spouse's?
- How many Rockridge residents ride public transit?
- What is the commute time for workers in Mountain View?
- Do more people ride Caltrain or VTA each day?
- Do residents of Pacific Heights drive more than residents of North Beach?
- Where are San Francisco workers commuting from?
- How much worse is congestion in L.A.?
- Golden Gate Transit requires how much subsidy to transport each rider?
- How does the pavement in Vallejo compare to pavement in Benicia?
- Which Bay Area highway has the most potholes?
- ...and many more!

(Continued...)



Key findings from Phase 1 of *Vital Signs* include:

- Commute times and mode shares have remained remarkably stable for decades
- Though San Francisco and Santa Clara County “import” a lot of workers, most commuters live and work in the same county
- Traffic congestion and transit demand are highly concentrated in the central Bay Area
- Freeway travel times are more reliable in the Bay Area than in any other major U.S. metro area, despite our higher-than-average congestion levels
- The condition of Bay Area highways and bridges has improved over the years, but pavement conditions on local streets and roads have stagnated or grown worse
- Total transit ridership is growing, but per-capita transit use has fallen over time

Here is a list of the topics that *Vital Signs* will monitor and report on:

Transportation (January 2015)

- Commute Mode Choice
- Commute Time
- Commute Patterns
- Traffic Volumes at Regional Gateways
- Time Spent in Congestion
- Miles Traveled in Congestion
- Travel Time Reliability
- Transit Ridership
- Transit System Efficiency
- Daily Miles Traveled
- Street Pavement Condition
- Highway Pavement Condition
- Bridge Condition
- Transit Asset Condition

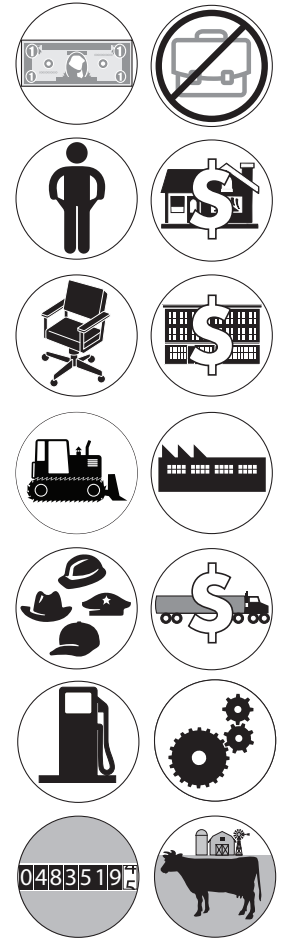


Land Use (March 2015)

- Our Population
- Our Jobs
- Housing Growth
- Greenfield Development

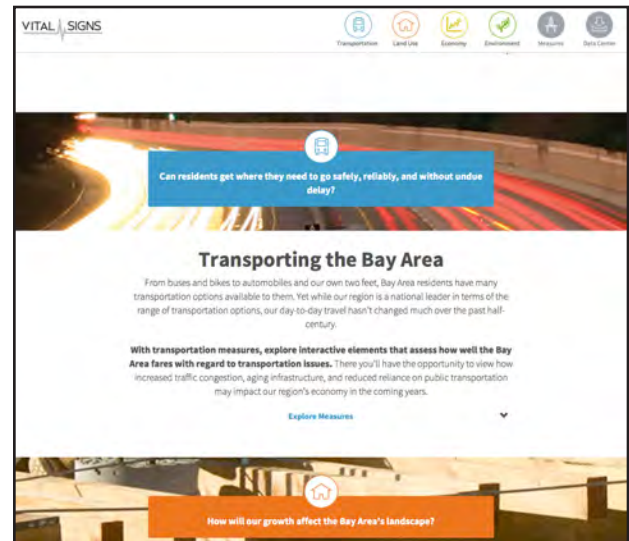
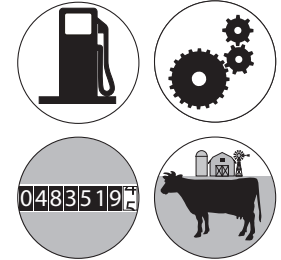
Economy (Spring 2015)

- Job Creation
- Unemployment
- Income
- Labor Force Participation
- Home Prices
- Rents
- Overall Affordability
- Housing Affordability
- Poverty
- Economic Output
- Freight Activity
- Freight Value



Environment (Summer 2015)

- Particulate Emissions
- Fuel Sales
- Fatalities from Crashes
- Injuries from Crashes
- Bay Fill
- Vulnerability to Sea Level Rise



Explore our region's Vital Signs at:
vitalsigns.mtc.ca.gov



101 8th Street, Oakland, CA, 94607