

An aerial photograph of a dirt trail winding through a lush, green, hilly landscape. Two cyclists are riding away from the camera on the trail. The lead cyclist is wearing a white shirt and dark shorts, while the second cyclist is wearing a blue shirt and dark shorts. The trail is a light brown color, contrasting with the surrounding green vegetation. The title text is overlaid on the upper left portion of the image.

Bay Trail Gap Closure Implementation (BTGCI) Plan

Joel Shaffer, P.E.

Associate Planner/Engineer –
Design & Project Delivery
Active Transportation, MTC

Working Group Meeting #1
11.29.2022

Today's Agenda

- Introductions
- Project Goals and Schedule
- Today's Objectives
- Current State of the Bay Trail
- Gap Closure Prioritization
- Breakout Group Discussions
- Q&A
- Next Steps

Project Team



Joel Shaffer, P.E.
MTC/Bay Trail
Project Manager

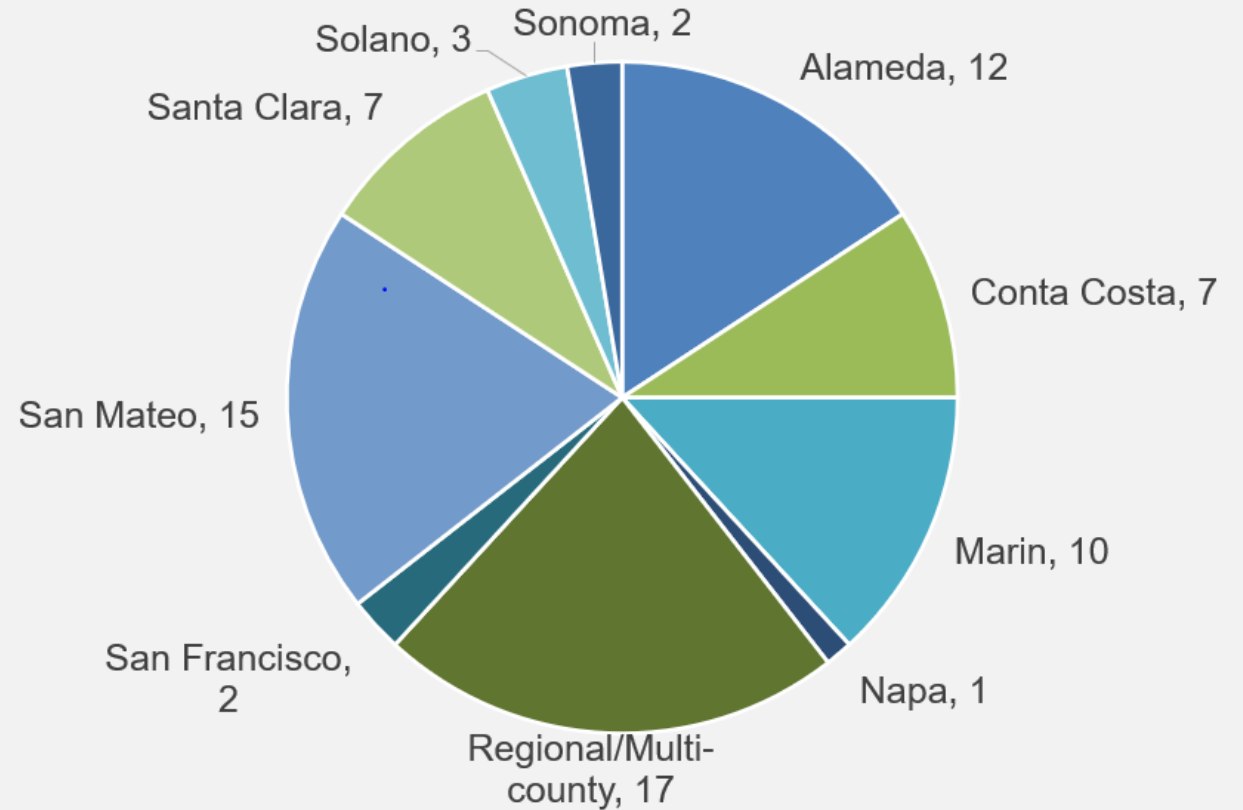


Jeff Knowles, AICP
Alta Project Manager

Zoom Poll 1

- In which county(ies) does your organization operate? (Select one)
 - Alameda County
 - Contra Costa County
 - Marin County
 - Napa County
 - City and County of San Francisco
 - San Mateo County
 - Santa Clara County
 - Solano County
 - Sonoma County
 - Regional/Multi-county

In which county(ies) does your organization operate?



76 respondents

Project Goals and Schedule

Project Summary

Purpose: *to identify and evaluate existing missing segments of Bay Trail (i.e. trail gaps) in order to prioritize their design and construction*



Project Need

- Last Gap Study for the Bay Trail is from **2005**
- **Criteria** in gap study are **outdated** (e.g., no equity considerations, sea level rise)
- Need for **data-driven project prioritization**
- **Align** with other recent **regional AT networks**
- Last cost estimator tool for gap closure developed in **2018**
- Need to **focus on enhancing access to and ridership on** the Bay Trail, including **spur and connector trails** adjacent to the Bay Trail
- **No more low-hanging fruit**

The San Francisco Bay Trail Project Gap Analysis Study



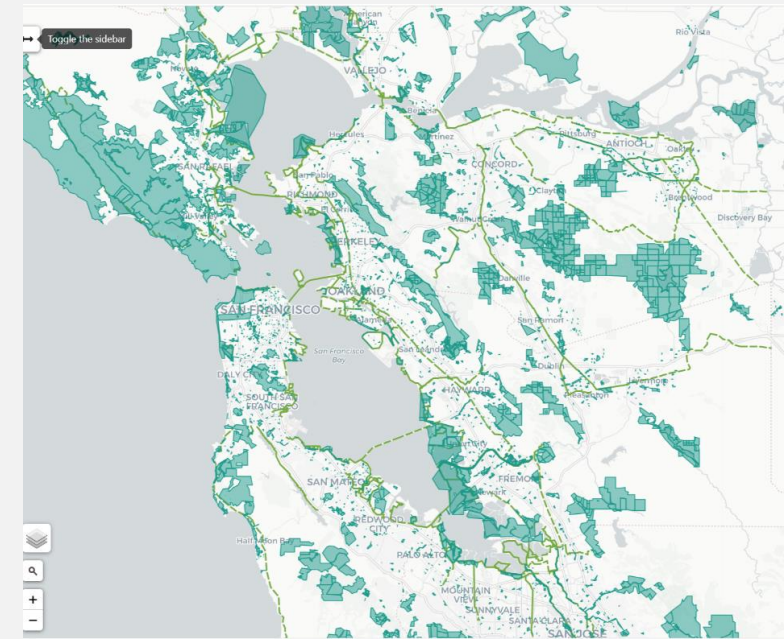
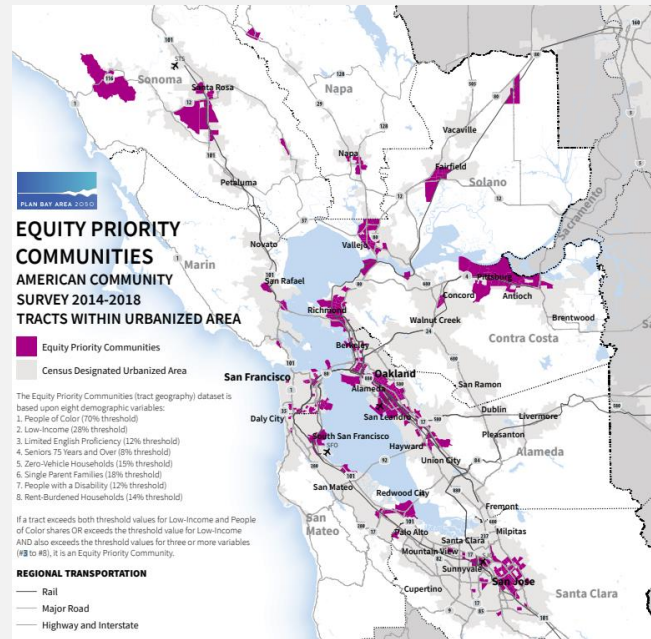
A Report on Closing the Gaps in the
500-mile Regional Trail System
Encircling San Francisco Bay

September 2005



Project Objectives

- Create new prioritization criteria
- Leverage and consider existing regional datasets (ATP, BayViz, BATC)
- Enhance lateral "spur" and "connector" trail access
- Enhance access to parks, open space, and natural areas for Equity Priority Communities (EPCs)
- Develop a Bay Trail spatial database and cost estimation tool
- Consider quick-build designs

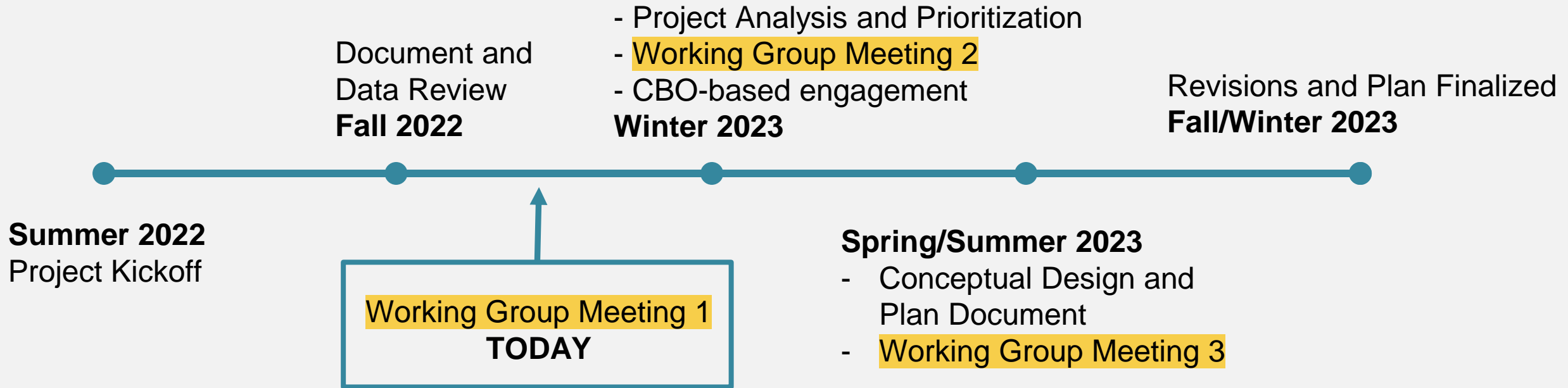


Key Outcomes/Deliverables

- Updated **evaluation criteria**
- Updated **inventory of gaps** in Bay Trail network
- Prioritized **project list**
- Updated **cost estimation tool**
- **Concept designs** for top-ranked projects
- Curate robust **community engagement, coordination & partnerships**
 - Engage community-based organizations (CBOs)
 - Agency and stakeholder coordination through project Working Group



Schedule



Today's Objectives

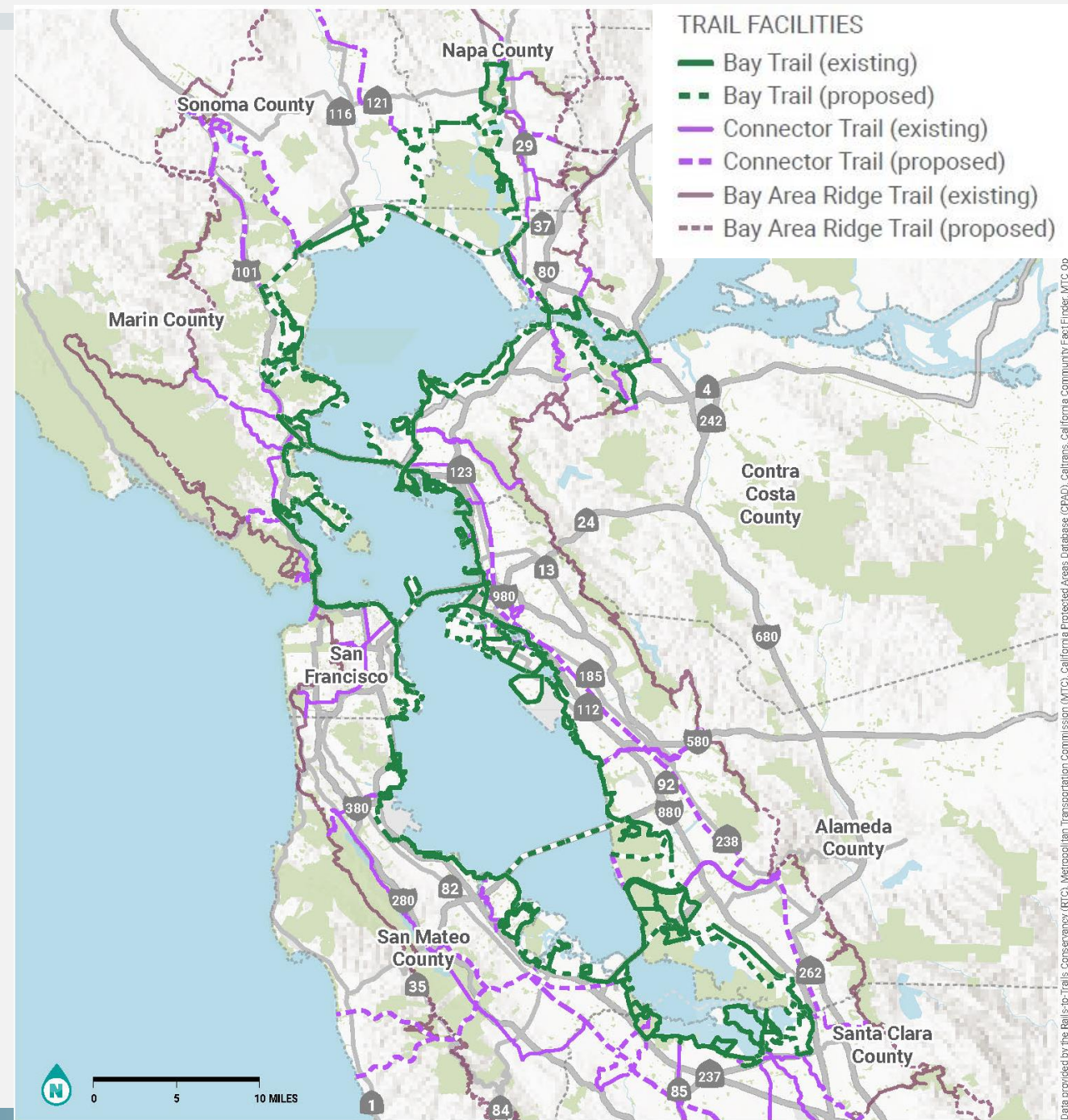
1. Is our understanding of trail gaps accurate?
2. What criteria should be used to prioritize gaps?
3. How should criteria be weighted?



Bay Trail Today

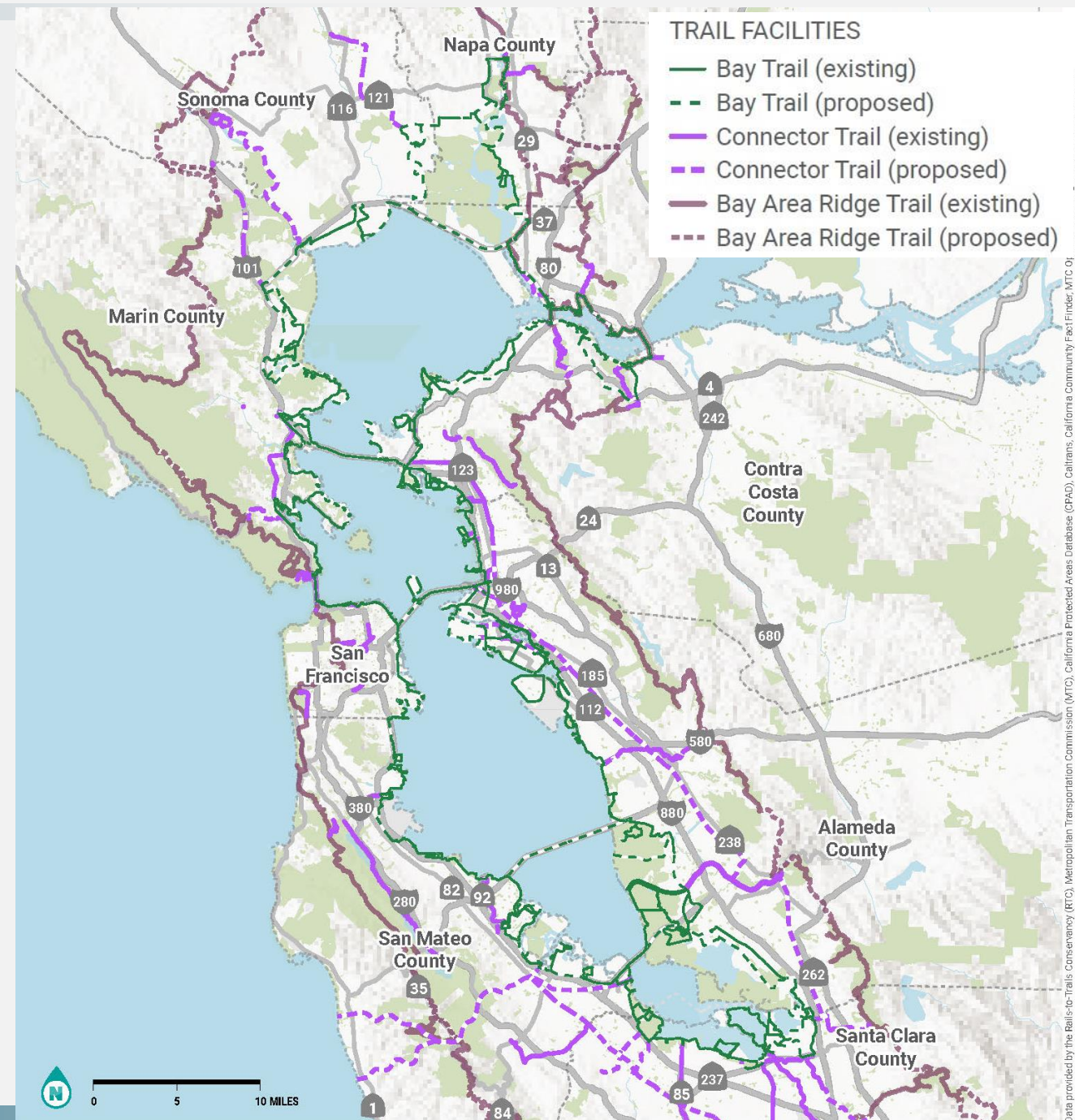
Bay Trail – Existing and Gaps

- Built miles of Bay Trail: 356 miles
- Miles of Bay Trail gaps: 208 miles
- Number of Bay Trail gaps: 246 gaps



Connector Trails – Existing and Proposed

- Built miles of Connector Trails: 226 miles
- Planned miles of Connector Trails: 239 miles

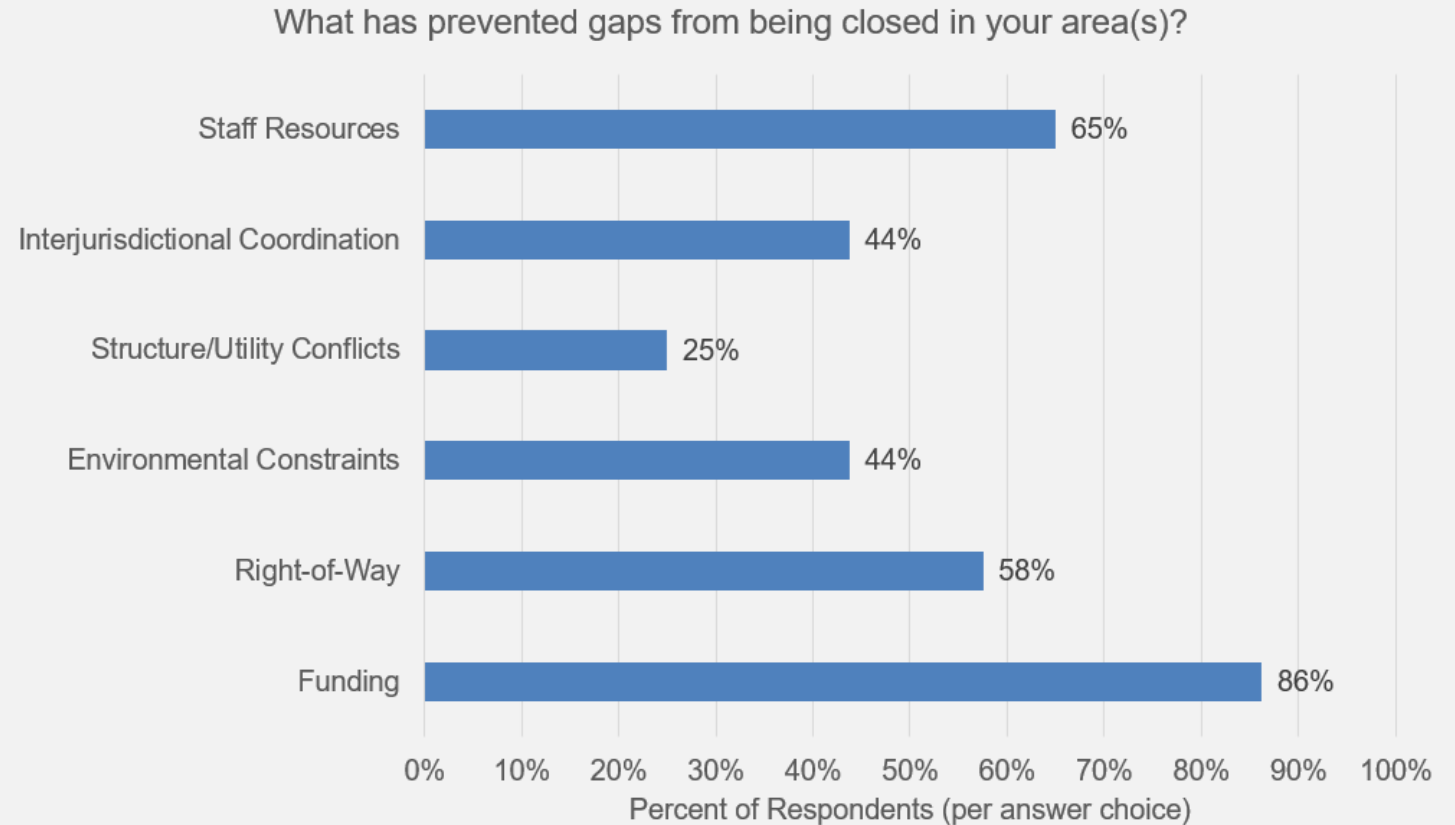


Bay Trail, Ridge Trail, and Connector Trails Miles

County	Built and Proposed Bay Trail (miles)	Percent of Bay Trail Completed	Connector Trails (full build-out, miles)
Alameda	159	69%	84
Contra Costa	82	65%	28
Marin	84	51%	37
Napa	28	64%	18
San Francisco	32	53%	31
San Mateo	69	75%	76
Santa Clara	52	75%	139
Solano	31	45%	7
Sonoma	27	37%	45
Bay Area Total	564	58.4	465

Zoom Poll 2

- What has prevented gaps from being closed in your area(s)? (Select all that apply)
 - Staff Resources
 - Interjurisdictional Coordination
 - Structure/Utility Conflicts
 - Environmental Constraints
 - Right-of-Way
 - Funding
 - Other (please type in chat)



80 respondents

Prioritization

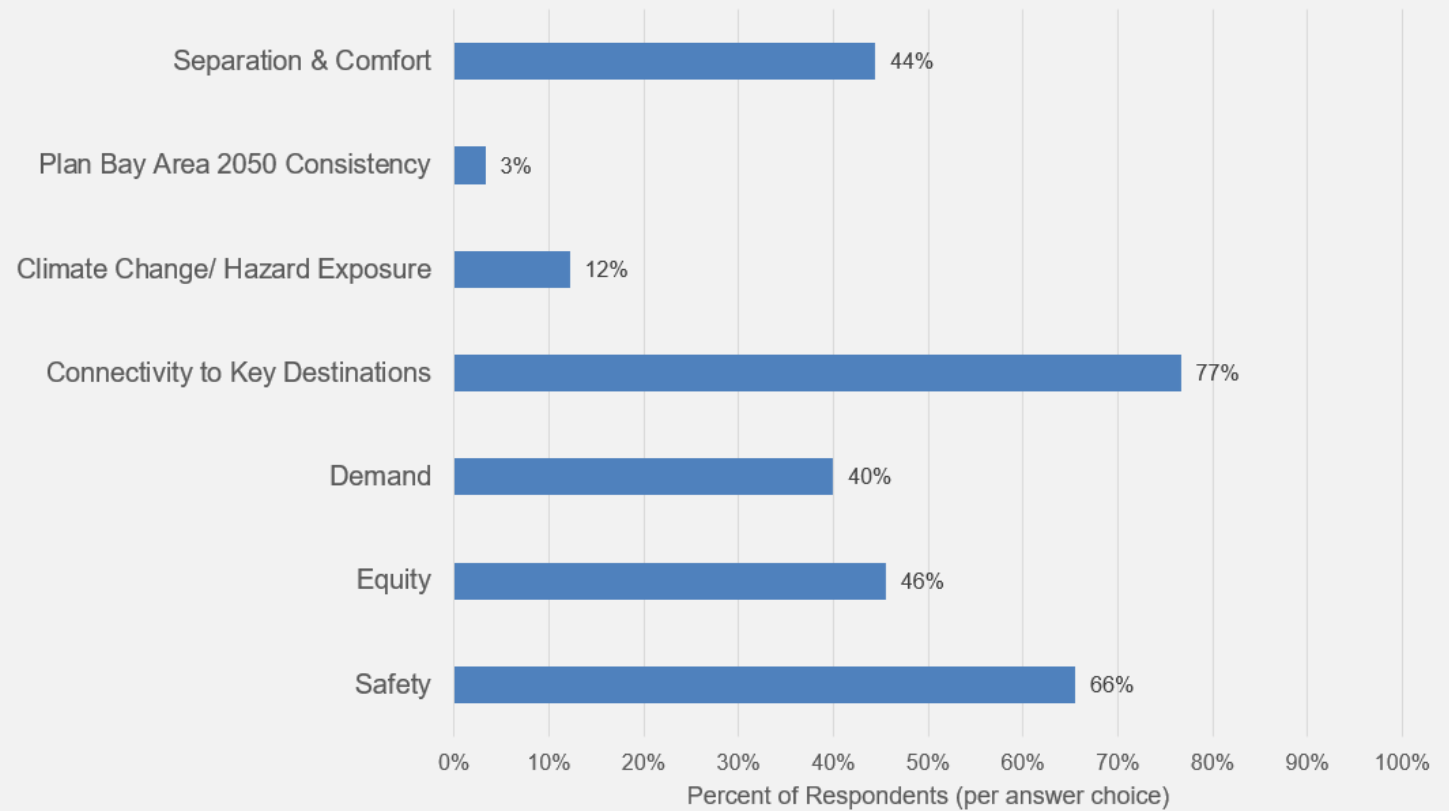
Prioritization Criteria

Criteria	Definition
Safety	The typical intensity of crash patterns along or near a trail gap.
Equity	Equity index leveraging a combination of demographic and public health data to identify socially vulnerable populations with high investment need.
Demand	Demand represents the usage potential of a particular trail gap.
Connectivity to Key Destinations (parks, transit hubs, schools)	Proximity to key destinations, such as open space, transit, schools, on-street active transportation facilities, retail, employment, civic spaces.
Climate Change/Hazard Exposure	Degree of exposure to multiple hazards and sea level rise.
Plan Bay Area 2050 Consistency	Future alignment with regional planning goals.
Separation/ Comfort	The degree of separation offered by a proposed facility

Zoom Poll 3

- Please select the **three** prioritization criteria that are most important to you and your organization:
 - Separation & Comfort
 - Plan Bay Area 2050 Consistency
 - Climate Change/Hazard Exposure
 - Connectivity to Key Destinations
 - Demand
 - Equity
 - Safety
 - Other (please, type in chat)

Please select the three prioritization criteria that are most important to you and your organization.



90 respondents

Breakout Groups

Discussion Questions

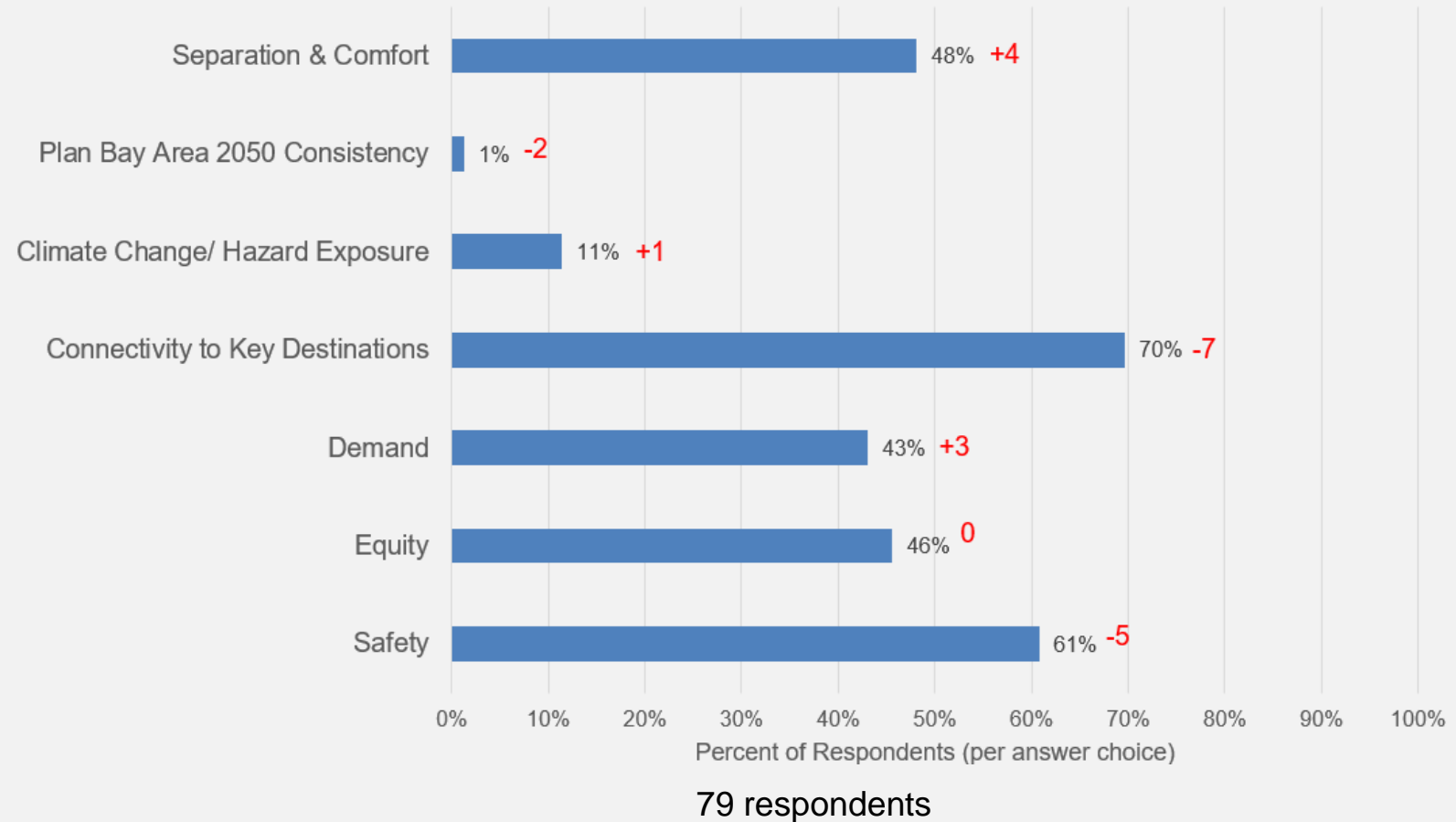
1. How should gaps in your geography be prioritized?
2. How should evaluation criteria be weighted?
3. What do you need to address the barriers to closing Bay Trail gaps, and how can MTC be helpful?
4. Do you know of any opportunities that your organization is working on that could help complete trail gaps?

Reconvene and Question and Answer

Zoom Poll 4

- Has your opinion changed? Please select the **three** prioritization criteria that are most important to you or your organization:
 - Separation & Comfort
 - Plan Bay Area 2050 Consistency
 - Climate Change/Hazard Exposure
 - Connectivity to Key Destinations
 - Demand
 - Equity
 - Safety
 - Other (please, type in chat)

Have you changed your mind? Please select the three prioritization criteria that are most important to you and your organization.



Question & Answer

- Please raise your hand to be called on or type your question into the chat.



**METROPOLITAN
TRANSPORTATION
COMMISSION**

Jshaffer@bayareametro.gov

(415) 778-5257

375 Beale Street, Suite 800

San Francisco, CA 94105

Next Steps

- **Homework Assignment:** Review the maps and provide input on evaluation criteria and weighting by **January 13, 2023**
- **Working Group Meeting #2:** Review gap closure projects and prioritization lists
- **Working Group Meeting #3:** Review draft concept designs and Draft Plan documents

Thank you!



**METROPOLITAN
TRANSPORTATION
COMMISSION**

Jshaffer@bayareametro.gov

(415) 778-5257

375 Beale Street, Suite 800

San Francisco, CA 94105