

Multimodal Bay Skyway

A bicycle and pedestrian, electric ferry, and bus connection between the East Bay and San Francisco



Photo: Noah Berger

Project Overview

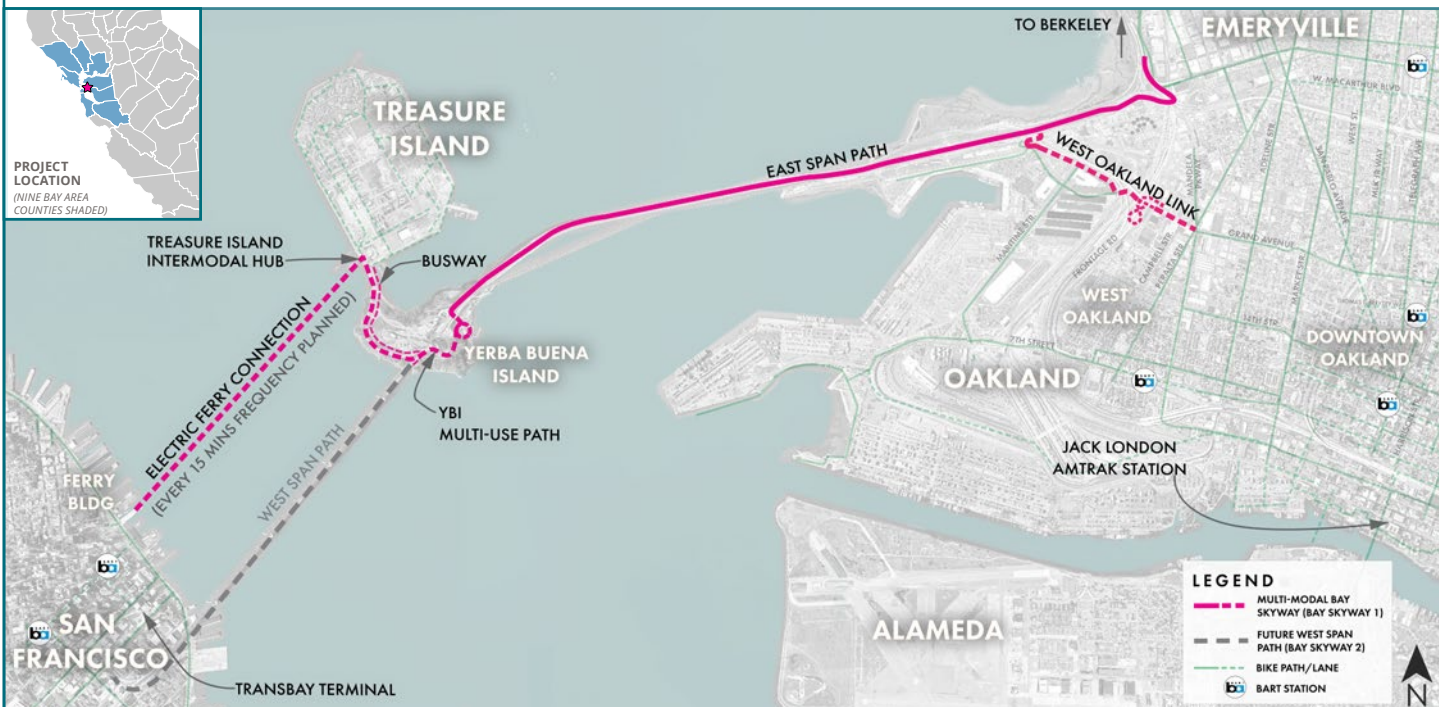
Multimodal Bay Skyway is a 7.5-mile-long bicycle highway (and more) that will run along the Bay Bridge corridor to join Oakland and downtown San Francisco. The project's four components will allow bicyclists and pedestrians to cross San Francisco Bay and improve transit on the corridor:

- **Bay Skyway (Phase 1):** A network of multi-use paths between West Oakland, Emeryville, and Treasure Island with a ferry connection to downtown San Francisco.
- **Electric ferry:** New service at 15-minute intervals between Treasure Island and the San Francisco Ferry Building.
- **Bus-only lane:** A 1-way bus lane between Treasure Island and the Bay Bridge West Span that will slash bus travel time for transit users.

- **Bay Skyway (Phase 2):** The ultimate transbay walk/bike path, which will allow walking and biking to downtown San Francisco on a new West Span pathway.

Project Benefits

- Adds a new sustainable and low-cost mode of travel to the Bay Bridge corridor.
- Provides a bicycle/e-bike/micromobility connection between the two cities with the lowest car ownership rates in California.
- Provides 20,000 future residents of Treasure Island with improved transit and bicycle access to the East Bay and regional rail such as BART, Capitol Corridor and Amtrak.
- Adds capacity to the Bay Bridge corridor without increasing vehicle-miles traveled (VMT), greenhouse gas emissions or air pollution.



Bay Skyway Phase 1 Schedule

	2019-22	2023	2024	2025	2026	2027	2028
California Environmental Quality Act Clearance (CEQA)	[Progress bar]						
National Environmental Policy Act Clearance (NEPA)	[Progress bar]						
Public Engagement	[Progress bar]						
Design (PS & E)	[Progress bar]						
Right-of-Way/Construction	[Progress bar]						

Segment	Construction Cost	Projected Opening
East Span Path	\$400M*	OPEN
TI-SF Ferry Electrification & Expansion	\$6.4M	July 2025
YBI Multi-use Path & Bus Lane	\$78.8 M	July 2028
West Oakland Link	\$100.2M	May 2028

* Existing investment

Benefiting Historically Disadvantaged Communities

Multimodal Bay Skyway will provide access to union jobs and provide an affordable transportation option for residents of disadvantaged communities on both sides of the Bay.



Photo: Noah Berger

Car-Free Housing

In the next decade, significant housing development is planned adjacent to Multimodal Bay Skyway. Projects include 8,000 units on Treasure Island, 5,000 in West Oakland and 29,000 in downtown Oakland, including thousands of affordable homes. Bay Skyway Phase 1 supports car-free development with a Transbay pathway and electric ferry network that will help residents establish sustainable transportation habits starting on move-in day.

Contact: Gavin Lohry, Project Manager
glohry@bayareametro.gov, 415-778-6676



While Bay Skyway Phase 1 is being developed, MTC and regional and state partners also are working to complete the original vision: Bay Skyway Phase 2, which will add a pathway to the Bay Bridge West Span. The path will have the capacity to carry 7,500 bicycle trips and 4,500 walkers per hour across the Bay. Phase 2 relies on Phase 1 elements to connect to the 24,000 new residents on Treasure Island, to the existing East Span path and to the disadvantaged communities of West Oakland.

Together, the two Bay Skyway phases will construct a critical segment of the San Francisco Bay Trail which, when complete, will give hikers, joggers, bicyclists and wheelchair-users access to more than 500 miles of pathways encircling the bay. With the rapid adoption of electric bicycles (e-bikes) in the Bay Area, the Bay Skyway also will provide an alternative to cross the Bay without adding to roadway or transit congestion.